



icon
compact

icon collection

l'intramontabile texture del cemento
icona senza tempo
unicomstarker ne ripropone l'essenziale matericità
declinata in cinque speciali nuances
per architetture contemporanee

the imperishable concrete texture
everlasting icon
unicomstarker introduces this essential material
in five special hues
for contemporary architectures

bone white

dove gray

gun powder

taupe back

jet black



icon dove gray
45 x 90 18" x 36"

unicomstarker

icon collection



dove gray



icon dove gray
60 x 60 + 30 x 60
24" x 24" + 12" x 24"



icon dove gray
60 x 60 + 30 x 60
24" x 24" + 12" x 24"



icon dove gray
60 x 60 + 30 x 60
24" x 24" + 12" x 24"



icon bone white
45 x 90 + 15 x 90
18" x 36" + 6" x 36"

bone white



icon bone white
45 x 90 18" x 36"



icon taupe back
80 x 80 32" x 32"

unicomstarker

icon collection



taupe back



icon taupe back
80 x 80 32" x 32"



icon taupe back
80 x 80 32" x 32"



icon gun powder
60 x 60 24" x 24"

unicomstarker

icon collection

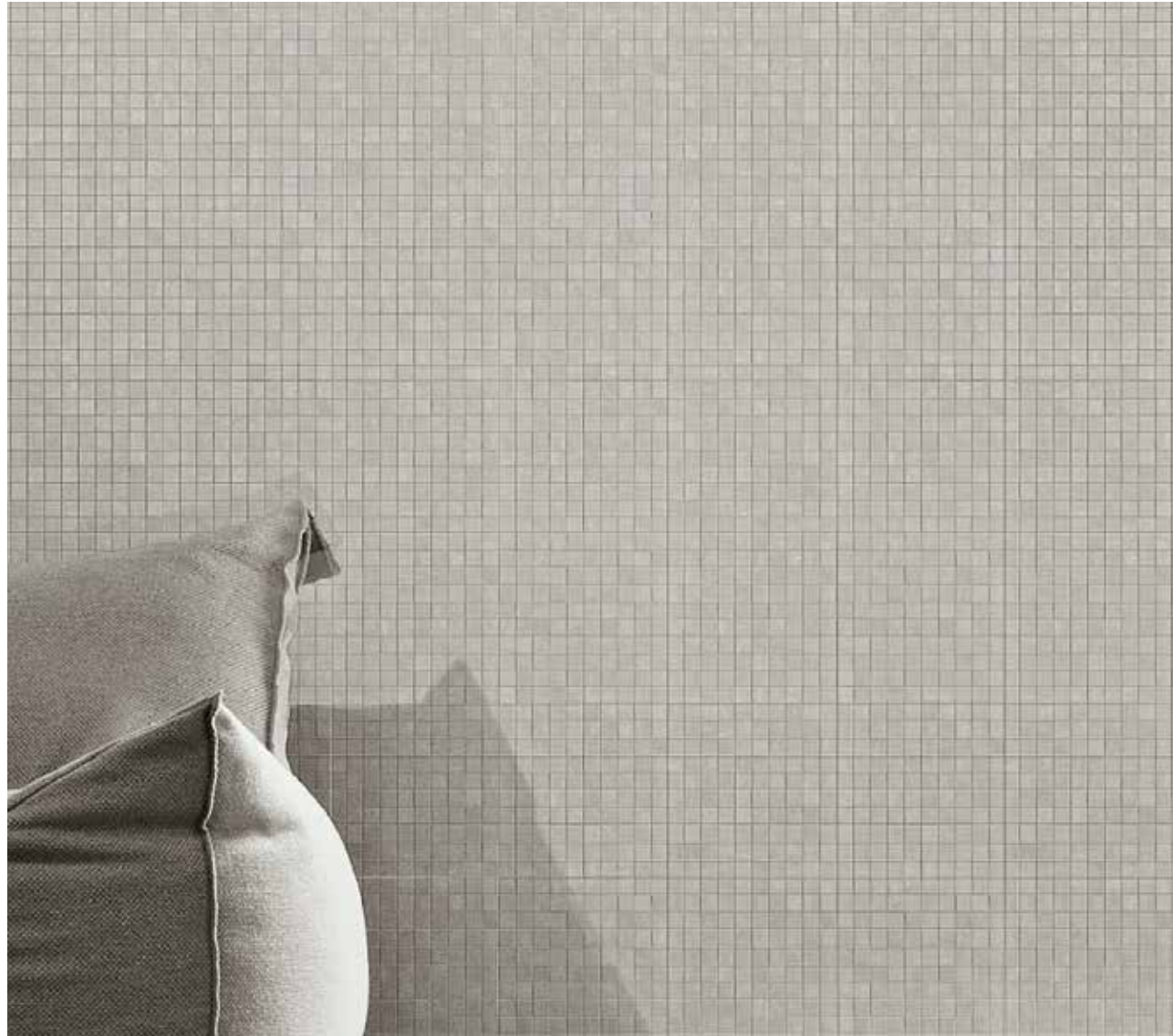


gun powder





icon gart power
15 x 90 6" x 36"



dove gray mosaico



icon dove gray mosaico
30 x 30 12" x 12"



icon jet black
80 x 80 32" x 32"

unicomstarker

icon collection



jet black



icon jet black
80 x 80 32" x 32"



taupe back stripes

tones

bone white

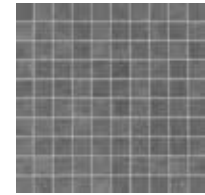
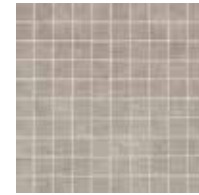
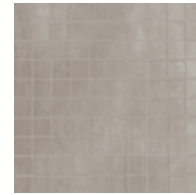
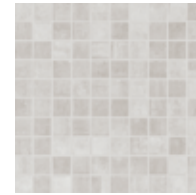
dove gray

gun powder

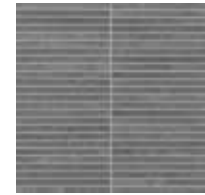
taupe back

jet black

mosaico



stripes





icon tiny 1
20 x 20 8" x 8"

unicomstarker

icon collection



icon variation 1
60 x 60 24" x 24"

icon special



variation 1



variation 2

rettificato 60 x 60 24" x 24" 61

tiny 1



tiny 2



rettificato 20 x 20 8" x 8" 79

disponibile in 18 soggetti 18 subject available



icon variation 2
60 x 60 24" x 24"



esagono



icon esagono blend
21 x 18,2 8¹⁷/₆₄" x 7²³/₃₂"



icon esagono blend
21 x 18,2 - 8,176" x 7,28"



bone white
22.5%



dove grey
22.5%



gun powder
22.5%



jet black
10%



taupe back
22.5%

icon blend



formati sizes formate formats

rettificato 60 x 120 24" x 48" **66**

rettificato 15 x 90 6" x 36" **62**

rettificato 45 x 90 18" x 36" **57**

rettificato 80 x 80 32" x 32" **65**

rettificato 60 x 60 24" x 24" **54**

grip rettificato 60 x 60 24" x 24" **55**

rettificato 30 x 60 12" x 24" **51**

lappato rett. 80 x 80 32" x 32" **68**

lappato rett. 60 x 60 24" x 24" **56**

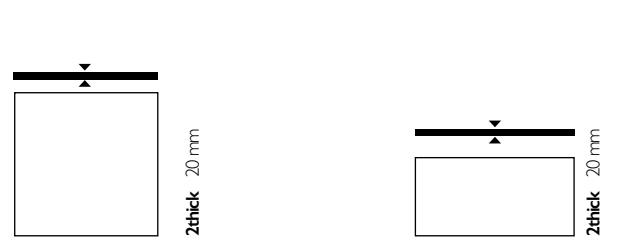
mosaico 30 x 30 12" x 12" **140**

stripes 30 x 30 12" x 12" **28**

esagono 21 x 18.2 8_{17/64}" x 7_{2/3}" **54**

100 tessere tessera 3,05 x 3,05

50 tessere tessera 1,2 x 1,5



RETTIFICATO

80 x 80 32" x 32" **96** disponibile in tutti i colori available in all colors

45 x 89.7 18" x 36" **94** disponibile nei colori: gun powder, taupe back, jet black available in: gun powder, taupe back, jet black

pezzi speciali special items pièces especiales formteile

gradino rett. gradino rett. grip 30 x 60 12" x 24" **33** **34**

gradone costa retta gradone costa retta grip 30 x 60 x 4 12" x 24" x 1_{2/3}" **115** **118**

gradone ang. costa retta dx/sx gradone ang. costa retta dx/sx grip 30 x 30 x 4 12" x 12" x 1_{2/3}" **118** **120**

elemento a L rett. elemento a L rett. grip 30 x 60 x 5 12" x 24" x 2" **49** **50**

battiscopa smaltato rett. 7 x 60 3" x 24" **15**

battiscopa smaltato rett. 9,5 x 80 4" x 32" **24**

caratteristiche tecniche technical features carateristiques techniques technische eigenschaften

assorbimento d'acqua water absorption absorption d'eau wasseraufnahme **<0,5%**

resistenza alla flessione breaking strength résistance a la flexion biegezugfestigkeit **35 N/mm²**

resistenza agli acidi resistance to acid résistance aux acides säurebeständigkeit **GLA**

resistenza al gelo frost resistance résistance au gel frostbeständigkeit **resiste frost proof aucune attération keine änderung**

resistenza alle macchie stain resistance résistance aux taches flackenbeständigkeit **4**

planarità flatness planéité ebenheit **UNI EN ISO 10545/2 ± 0.5 % conforme - complying conforme - erfüllt**

spessore thickness épaisseur dicke **30 x 60 60 x 60 spessore thickness épaisseur dicke ≠ 9.5mm**

60 x 120 spessore thickness épaisseur dicke **≠ 10mm**

45 x 90 80 x 80 15 x 90 spessore thickness épaisseur dicke **≠ 11 mm**

naturale **DIN51097 DIN51130** coefficiente d'attrito (scivolosità) static coefficient of friction **A+B R10**

DCOF BOT3000 coefficient de friction (glissement) reibungskoeffizient (schlüpfrigkeit) **>0.42**

grip **DIN51097 DIN51130** coefficiente d'attrito (scivolosità) static coefficient of friction **A+B+C R11**

DIN51097 DIN51130 coefficiente d'attrito (scivolosità) static coefficient of friction **A+B+C R11**

variazioni cromatiche color shade variations variation de nuance nuance variations **V2 variazione leggera V2 slight variation V2 légère variation V2 leichte variation**

imballi packing embalages verpackung

		spessore thickness	pezzi/sc pcs/box	m ² /sc sqm/box	kg/sc kgs/box	sc/pl box/pal	m ² /pl sqm/pal	kg/pl kgs/pal
60x120	rettificato	10	2	1.44	33.60	36	51.84	1209.60
15x90	rettificato	11	6	0.81	20.00	48	38.88	960.00
30x60	rettificato	9.5	6	1.08	23.40	48	51.84	1123.20
60x60	rettificato grip rettificato lappato rettificato	9.5	3	1.08	23.50	40	43.20	940.00
45x90	rettificato	11	3	1.21	31.00	30	36.45	930.00
80x80	2thick _ 20mm rettificato	20	1	0.64	30.50	45	28.80	1372.50
45x89.7	2thick _ 20mm rettificato	20	2	0.81	33.80	27	21.79	912.60
80x80	rettificato lappato rettificato	11	2	1.28	32.80	40	51.20	1312.00
21x18.2	esagono		16	0.46	10.15	100	45.86	1015.00
30x30	mosaico		11	0.99	21.45	54	53.46	1158.30
30x30	stripes		11		21.45			
60x60	variation 1/2 rettificato	3	1.08	23.50	40	43.20	940.00	
20x20	tiny 1/2 rettificato	25	1.00	21.76	56	56.00	1218.56	
7x60	battiscopa smaltato rettificato	12			12.60			
9.5x80	battiscopa smaltato rettificato	8			15.12			
30x60	gradino rettificato grip rettificato	8			31.20			
30x60	gradone costa retta rettificato grip rettificato	4			17.20			
30x30	gradone angolare costa retta sx sx grip	2			4.30			
30x60	elemento a L rettificato grip rettificato	4			17.20			

il peso riportato è comprensivo del pallet di supporto the indicated weight includes the supporting pallet le poids indiqué est compris de la palette de support das angegebene gewicht versteht sich einschließlich der palette

informazioni tecniche technical informations





unicomstarker

via flumendosa 7
41042 fiorano modenese
modena italy
T +39 (0)536 926011
F italy +39 (0)536 926038
F world +39 (0)536 926033
F europe +39 (0)536 926023

unicomstarker.com